

MONA OFFSHORE WIND PROJECT

Tree Survey Clarification Note: Appendix 17.5 Updated Tree Survey Plan Part 3

Deadline: 3

Application Reference: EN010137

Document Reference: S_D3_17.5

Document Number: MOCNS-J3303-RPS-10332

30 September 2024

F01



Image of an offshore wind farm

Document status

Version	Purpose of document	Authored by	Reviewed by	Approved by	Review date
F01	Submission at Deadline 3	RPS	Mona Offshore Wind Ltd.	Mona Offshore Wind Ltd.	30 September 2024

Prepared by: **RPS**

Prepared for: **Mona Offshore Wind Ltd.**

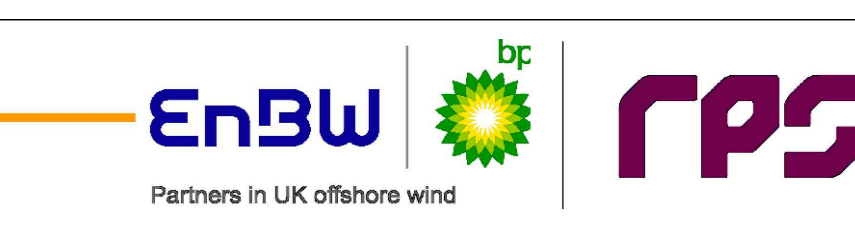


LEGEND

- Mona Offshore Development Area (MO_PRJ_BP_0162_DCO_Rev11)
- Tree with numbered reference. Canopy spread and coloured BSS837:2012 tree quality category as shown below. # = Tree details estimate (inaccessible tree) = Tree in off site location
- Vegetation group with numbered reference. Canopy extents and coloured BSS837:2012 tree quality category as shown below.
- Hedge with numbered reference. Canopy extents and coloured BSS837:2012 tree quality category as shown below.
- Woodland with numbered reference. Canopy extents and coloured BSS837:2012 tree quality category as shown below.
- Tree Quality Categories - Table 1
 Category A - High quality
 Category B - Moderate quality
 Category C - Low quality
 Category U - Unsuitable for retention
- Direction of first significant branch
- Root protection area (RPA) Calculated in accordance with Section 4.6 - BSS837:2012
- Tree protected by Conwy Council or Denbighshire Tree Preservation Order (TPO). Bracketted number reference relates to the TPO Schedule.
- Veteran tree buffer (15 x stem Ø) (as per standing advice produced by Natural Resource Wales)
- Designated Ancient Woodland and buffer (15m offset, as per Natural Resource Wales ancient woodland inventory, via open data publication)

NOTES:

- Refer to RPS Tree Survey & Arboricultural Impact Assessment Report for further details.
- Survey based on a visual inspection from the ground and is not intended as a full arboricultural inspection.
- Plans produced in accordance with recommendations set out in BS 5837:2012 - 'Trees in Relation to design, demolition and construction'.
- Due to the legal protection afforded to breeding birds, vegetation removal should not take place during the bird nesting period, generally, although not restricted to, March - August inclusive.
- Survey based upon aerial photography, therefore tree locations should be deemed as approximate, and not digitally accurate.



Drawing Number: 742

Project Name:
MONA OFFSHORE WIND PROJECT

Drawing Title:
TREE SURVEY PLAN

Scale
Scale@A0: 1:500
0 50m

Geodetic Information:
Datum: ETRS 1989
Projection: British National Grid

Data Sources: Client

Service Layer Credits: Esri, HERE, Garmin, Intermap, increment P Corp., GEBCO, USGS, FAO, NPS, NRCAN, GeoBase, IGN, Kadaster NL, Ordnance Survey, Esri Japan, METI, Esri China (Hong Kong), (c) OpenStreetMap contributors, and the GIS User Community

VER	DATE	DETAILS	BY	CHECK
03	Sept/24	Comment	RC	DC

\\na01\projects\3900\Series\JL3999 - Morgan and Mona Offshore\Arboriculture\Tech\ACAD\Current\JL3999_701_742D_TCP_Cable_Route.dwg
 Visu@-Is-01\projects\3900\Series\JL3999 - Morgan and Mona Offshore\Arboriculture\Tech\ACAD\Current\JL3999_701_742D_TCP_Cable_Route.dwg

St Asaph Business Park COL/29/1991

Tree and woodland information currently only available via reviewing aerial mapping

Tree survey data not collected

LEGEND

- Mona Offshore Development Area (MO_PRJ_BP_0162_DCO_Rev11)
- Tree with numbered reference. Canopy spread and coloured BS5837:2012 tree quality category as shown below. # = Tree details estimate (inaccessible tree) = Tree in off site location
- Vegetation group with numbered reference. Canopy extents and coloured BS5837:2012 tree quality category as shown below.
- Hedge with numbered reference. Canopy extents and coloured BS5837:2012 tree quality category as shown below.
- Woodland with numbered reference. Canopy extents and coloured BS5837:2012 tree quality category as shown below.
- BS 5837:2012 Tree Quality Categories - Table 1
 - Category A - High quality
 - Category B - Moderate quality
 - Category C - Low quality
 - Category U - Unsuitable for retention
- Direction of first significant branch
- Root protection area (RPA) Calculated in accordance with Section 4.6 - BS5837:2012
- Tree protected by Conway Council or Denbighshire Tree Preservation Order (TPO). Bracketted number reference relates to the TPO Schedule.
- Veteran tree buffer (15 x stem Ø) (as per standing advice produced by Natural Resource Wales)
- Designated Ancient Woodland and buffer (15m offset, as per Natural Resource Wales ancient woodland inventory, via open data publication)

- NOTES:**
- Refer to RPS Tree Survey & Arboricultural Impact Assessment Report for further details.
 - Survey based on a visual inspection from the ground and is not intended as a full arboricultural inspection.
 - Plans produced in accordance with recommendations set out in BS 5837:2012 - 'Trees in Relation to design, demolition and construction'.
 - Due to the legal protection afforded to breeding birds vegetation removal should not take place during the bird nesting period, generally, although not restricted to, March - August inclusive.
 - Survey based upon aerial photography, therefore tree locations should be deemed as approximate, and not digitally accurate.



Drawing Number: 743

VER	DATE	DETAILS	BY	CHECK
03	Sept/24	Comment	RC	DC

Project Name:
MONA OFFSHORE WIND PROJECT

Drawing Title:
TREE SURVEY PLAN

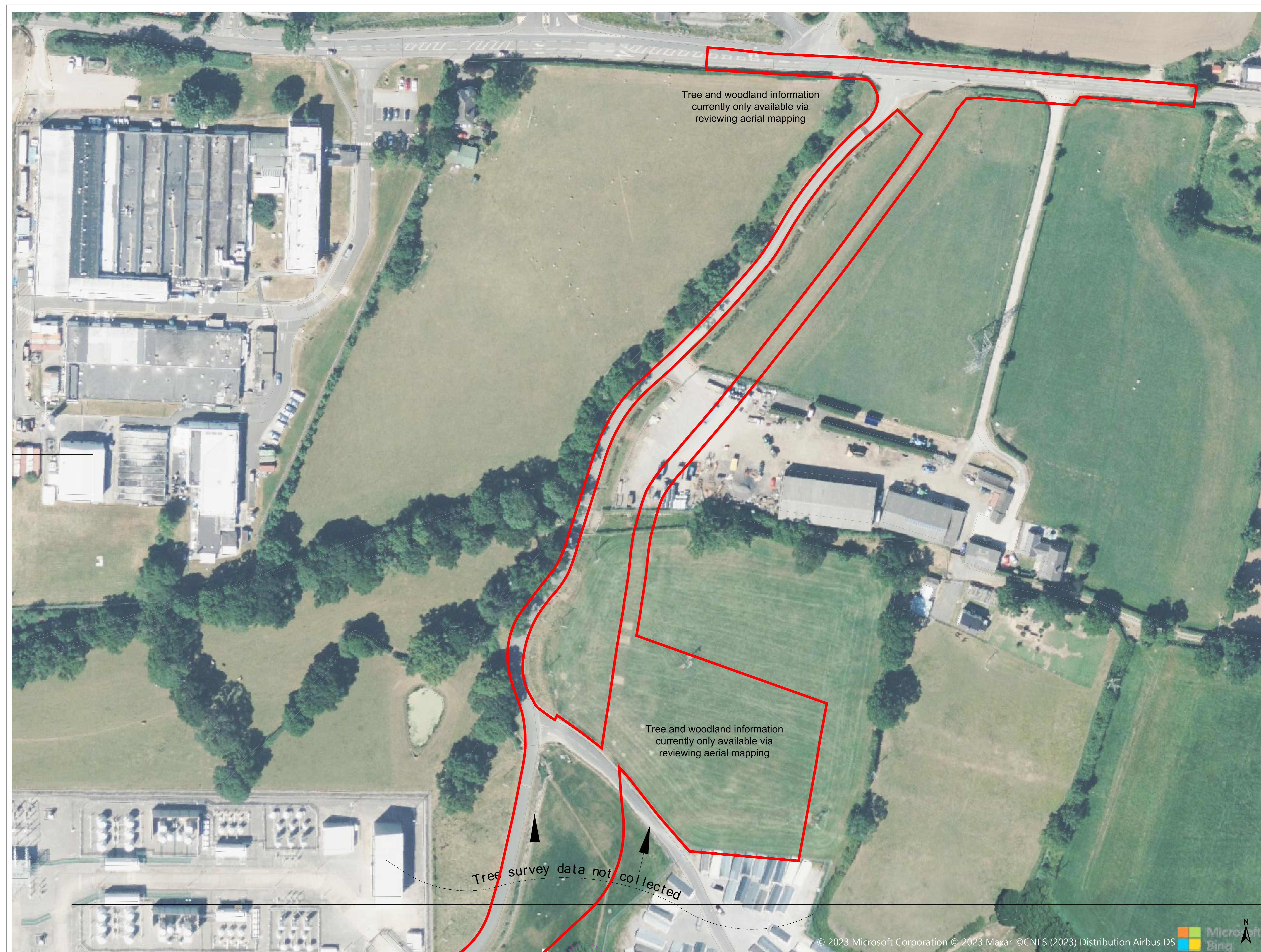
Scale:
Scale@A0: 1:500

Geodetic Information:
Datum: ETRS 1989
Projection: British National Grid

Data Sources: Client

Service Layer Credits: Esri, HERE, Garmin, Intermap, increment P Corp., GEBCO, USGS, FAO, NPS, NRCAN, GeoBase, IGN, Kadaster NL, Ordnance Survey, Esri Japan, METI, Esri China (Hong Kong), (c) OpenStreetMap contributors, and the GIS User Community

\\s01-ifs-01\projects\3000\Series\JL3999 - Morgan and Mona Offshore\Arboriculture\Tech\ACAD\Current\JL3999_701-7430_TCP_Cable_Route.dwg
\\s01-ifs-01\projects\3000\Series\JL3999 - Morgan and Mona Offshore\Arboriculture\Tech\ACAD\Current\JL3999_701-7430_TCP_Cable_Route.dwg



Tree and woodland information currently only available via reviewing aerial mapping

Tree and woodland information currently only available via reviewing aerial mapping

Tree survey data not collected

LEGEND

- Mona Offshore Development Area (MO_PRJ_BP_0162_DCO_Rev11)
- Tree with numbered reference. Canopy spread and coloured BS5837:2012 tree quality category as shown below. # = Tree details estimate (inaccessible tree) = Tree in off site location
- Vegetation group with numbered reference. Canopy extents and coloured BS5837:2012 tree quality category as shown below.
- Hedge with numbered reference. Canopy extents and coloured BS5837:2012 tree quality category as shown below.
- Woodland with numbered reference. Canopy extents and coloured BS5837:2012 tree quality category as shown below.
- BS 5837:2012 Tree Quality Categories - Table 1
 - Category A - High quality
 - Category B - Moderate quality
 - Category C - Low quality
 - Category U - Unsuitable for retention
- Direction of first significant branch
- Root protection area (RPA) Calculated in accordance with Section 4.6 - BS5837:2012
- Tree protected by Conwy Council or Denbighshire Tree Preservation Order (TPO). Bracketted number reference relates to the TPO Schedule.
- Veteran tree buffer (15 x stem Ø) (as per standing advice produced by Natural Resource Wales)
- Designated Ancient Woodland and buffer (15m offset, as per Natural Resource Wales ancient woodland inventory, via open data publication)

- NOTES:**
- Refer to RPS Tree Survey & Arboricultural Impact Assessment Report for further details.
 - Survey based on a visual inspection from the ground and is not intended as a full arboricultural inspection.
 - Plans produced in accordance with recommendations set out in BS 5837:2012 - 'Trees in Relation to design, demolition and construction'.
 - Due to the legal protection afforded to breeding birds vegetation removal should not take place during the bird nesting period, generally, although not restricted to, March - August inclusive.
 - Survey based upon aerial photography, therefore tree locations should be deemed as approximate, and not digitally accurate.



Drawing Number: 744

Project Name:
MONA OFFSHORE WIND PROJECT

Drawing Title:
TREE SURVEY PLAN

Scale
Scale@A0: 1:500
0 50m

Geodetic Information:
Datum: ETRS 1989
Projection: British National Grid

Data Sources: Client

Service Layer Credits: Esri, HERE, Garmin, Intermap, increment P Corp., GEBCO, USGS, FAO, NPS, NRCAN, GeoBase, IGN, Kadaster NL, Ordnance Survey, Esri Japan, METI, Esri China (Hong Kong), (c) OpenStreetMap contributors, and the GIS User Community

VER	DATE	DETAILS	BY	CHECK
03	Sept/24	Comment	RC	DC

\\s01-rs-01\projects\3000\Series\JL3999 - Morgan and Mona Offshore\Arboriculture\Tech\ACAD\Current\JL3999_7017430_TCP_Cable_Route.dwg
 Visu@rs-01\projects\3000\Series\JL3999 - Morgan and Mona Offshore\Arboriculture\Tech\ACAD\Current\JL3999_7017430_TCP_Cable_Route.dwg

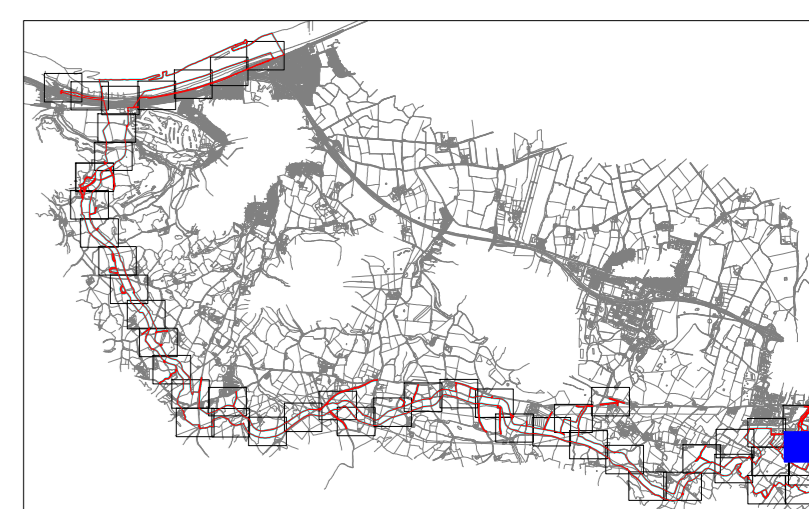


LEGEND

- Mona Offshore Development Area (MO_PRJ_BP_0162_DCO_Rev11)
- Tree with numbered reference. Canopy spread and coloured BSS5837:2012 tree quality category as shown below.
= Tree details estimate (inaccessible tree)
* = Tree in off site location
- Vegetation group with numbered reference. Canopy extents and coloured BSS5837:2012 tree quality category as shown below.
- Hedge with numbered reference. Canopy extents and coloured BSS5837:2012 tree quality category as shown below.
- Woodland with numbered reference. Canopy extents and coloured BSS5837:2012 tree quality category as shown below.
- Tree Quality Categories - Table 1
BS 5837:2012
● Category A - High quality
● Category B - Moderate quality
● Category C - Low quality
● Category U - Unsuitable for retention
- Direction of first significant branch
- Root protection area (RPA) Calculated in accordance with Section 4.6 - BSS5837:2012
- Tree protected by Conwy Council or Denbighshire Tree Preservation Order (TPO). Bracketted number reference relates to the TPO Schedule.
- Veteran tree buffer (15 x stem Ø) (as per standing advice produced by Natural Resource Wales)
- Designated Ancient Woodland and buffer (15m offset, as per Natural Resource Wales ancient woodland inventory, via open data publication)

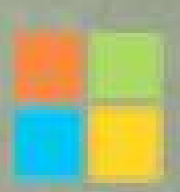
NOTES:

- Refer to RPS Tree Survey & Arboricultural Impact Assessment Report for further details.
- Survey based on a visual inspection from the ground and is not intended as a full arboricultural inspection.
- Plans produced in accordance with recommendations set out in BS 5837:2012 - 'Trees in Relation to design, demolition and construction'.
- Due to the legal protection afforded to breeding birds vegetation removal should not take place during the bird nesting period, generally, although not restricted to, March - August inclusive.
- Survey based upon aerial photography, therefore tree locations should be deemed as approximate, and not digitally accurate.



Drawing Number:
745

VER	DATE	DETAILS	BY	CHECK
03	Sept/24	Comment	RC	DC



Project Name:
MONA OFFSHORE WIND PROJECT

Drawing Title:
TREE SURVEY PLAN

Scale
Scale@A0: 1:500

Geodetic Information:
Datum: ETRS 1989
Projection: British National Grid

Data Sources: Client

Service Layer Credits: Esri, HERE, Garmin, Intermap, increment P Corp., GEBCO, USGS, FAO, NPS, NRCAN, GeoBase, IGN, Kadaster NL, Ordnance Survey, Esri Japan, METI, Esri China (Hong Kong), (c) OpenStreetMap contributors, and the GIS User Community

\\msc01-01\projects\3900\Series\JL3999 - Morgan and Mona Offshore\Arboriculture\Tech\ACAD\Current\JL3999_701_745D_TCP_Cable_Route.dwg
\\msc01-01\projects\3900\Series\JL3999 - Morgan and Mona Offshore\Arboriculture\Tech\ACAD\Current\JL3999_701_745D_TCP_Cable_Route.dwg



LEGEND

- Mona Offshore Development Area (MO_PRJ_BP_0162_DCO_Rev11)
- Tree with numbered reference. Canopy spread and coloured BS5837:2012 tree quality category as shown below. # = Tree details estimate (inaccessible tree) = Tree in off site location
- Vegetation group with numbered reference. Canopy extents and coloured BS5837:2012 tree quality category as shown below.
- Hedge with numbered reference. Canopy extents and coloured BS5837:2012 tree quality category as shown below.
- Woodland with numbered reference. Canopy extents and coloured BS5837:2012 tree quality category as shown below.
- Tree Quality Categories - Table 1 BS 5837:2012
 - Category A - High quality
 - Category B - Moderate quality
 - Category C - Low quality
 - Category U - Unsuitable for retention
- Direction of first significant branch
- Root protection area (RPA) Calculated in accordance with Section 4.6 - BS5837:2012
- Tree protected by Conwy Council or Denbighshire Tree Preservation Order (TPO). Bracketted number reference relates to the TPO Schedule.
- Veteran tree buffer (15 x stem Ø) (as per standing advice produced by Natural Resource Wales)
- Designated Ancient Woodland and buffer (15m offset, as per Natural Resource Wales ancient woodland inventory, via open data publication)

- NOTES:**
- Refer to RPS Tree Survey & Arboricultural Impact Assessment Report for further details.
 - Survey based on a visual inspection from the ground and is not intended as a full arboricultural inspection.
 - Plan produced in accordance with recommendations set out in BS 5837:2012 - 'Trees in Relation to design, demolition and construction'.
 - Due to the legal protection afforded to breeding birds vegetation removal should not take place during the bird nesting period, generally, although not restricted to, March - August inclusive.
 - Survey based on aerial photography, therefore tree locations should be deemed as approximate, and not digitally accurate.



Drawing Number: 746

Project Name:
MONA OFFSHORE WIND PROJECT

Drawing Title:
TREE SURVEY PLAN

Scale
Scale@A0: 1:500

Geodetic Information:
Datum: ETRS 1989
Projection: British National Grid

Data Sources: Client

Service Layer Credits: Esri, HERE, Garmin, Intermap, increment P Corp., GEBCO, USGS, FAO, NPS, NRCAN, GeoBase, IGN, Kadaster NL, Ordnance Survey, Esri Japan, METI, Esri China (Hong Kong), (c) OpenStreetMap contributors, and the GIS User Community

VER	DATE	DETAILS	BY	CHECK
03	Sept/24	Comment	RC	DC

\\s01-rs-01\projects\3900\Series\JL3999 - Morgan and Mona Offshore\Arboriculture\Tech\ACAD\Current\JL3999_701-740_TCP_Cable_Route.dwg
\\s01-rs-01\projects\3900\Series\JL3999 - Morgan and Mona Offshore\Arboriculture\Tech\ACAD\Current\JL3999_701-740_TCP_Cable_Route.dwg

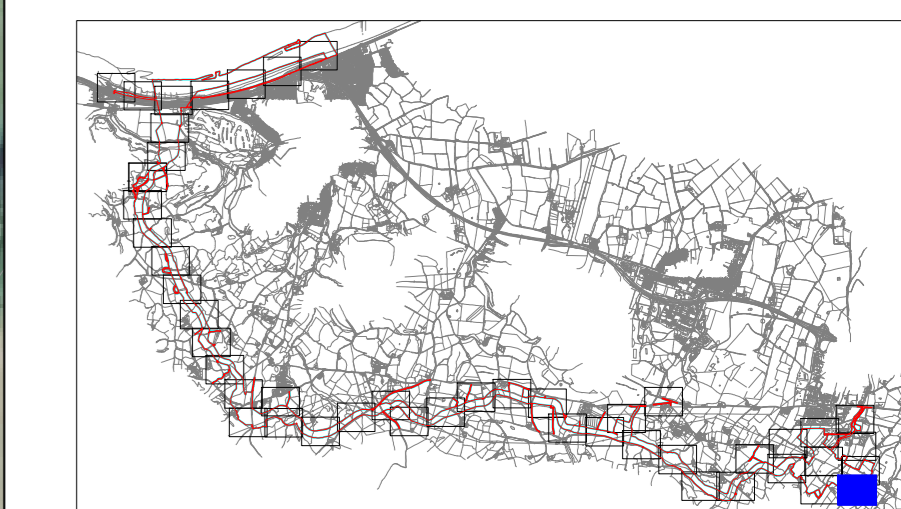


LEGEND

- Mona Offshore Development Area (MO_PRJ_BP_0162_DCO_Rev11)
- Tree with numbered reference. Canopy spread and coloured BS5837:2012 tree quality category as shown below. # = Tree details estimate (unaccessible tree) * = Tree in off site location
- Vegetation group with numbered reference. Canopy extents and coloured BS5837:2012 tree quality category as shown below.
- Hedge with numbered reference. Canopy extents and coloured BS5837:2012 tree quality category as shown below.
- Woodland with numbered reference. Canopy extents and coloured BS5837:2012 tree quality category as shown below.
- Trees Quality Categories - Table 1 BS 5837:2012
 - Category A - High quality
 - Category B - Moderate quality
 - Category C - Low quality
 - Category U - Unsuitable for retention
- Direction of first significant branch
- Root protection area (RPA) Calculated in accordance with Section 4.6 - BS5837:2012
- Tree protected by Conwy Council or Denbighshire Tree Preservation Order (TPO). Bracketted number reference relates to the TPO Schedule.
- Veteran tree buffer (15 x stem Ø) (as per standing advice produced by Natural Resource Wales)
- Designated Ancient Woodland and buffer (15m offset, as per Natural Resource Wales ancient woodland inventory, via open data publication)

NOTES:

- Refer to RPS Tree Survey & Arboricultural Impact Assessment Report for further details.
- Survey based on a visual inspection from the ground and is not intended as a full arboricultural inspection.
- Plans produced in accordance with recommendations set out in BS 5837:2012 - "Trees in Relation to design, demolition and construction".
- Due to the legal protection afforded to breeding birds vegetation removal should not take place during the bird nesting period; generally, although not restricted to, March - August inclusive.
- Survey based upon aerial photography, therefore tree locations should be deemed as approximate, and not digitally accurate.



Drawing Number: 747

VER	DATE	DETAILS	BY	CHECK
03	Sept/24	Comment	RC	DC

© 2023 Microsoft Corporation © 2023 Maxar ©CNES (2023) Distribution Airbus DS

Project Name:
MONA OFFSHORE WIND PROJECT

Drawing Title:
TREE SURVEY PLAN

Scale
Scale@A0: 1:500

Geodetic Information:
Datum: ETRS 1989
Projection: British National Grid

Data Sources: Client

Service Layer Credits: Esri, HERE, Garmin, Intermap, increment P Corp., GEBCO, USGS, FAO, NPS, NRCAN, GeoBase, IGN, Kadaster NL, Ordnance Survey, Esri Japan, METI, Esri China (Hong Kong), (c) OpenStreetMap contributors, and the GIS User Community

\\nas046-c01\projects\3900\Series\JL3999 - Morgan and Mona Offshore\Arboriculture\Tech\ACAD\Current\JL3999_701-740_TCP Cable Route.dwg
\\nas046-c01\projects\3900\Series\JL3999 - Morgan and Mona Offshore\Arboriculture\Tech\ACAD\Current\JL3999_701-740_TCP Cable Route.dwg